



Census of Marine Life Education and Outreach Network

Feb 12, 2009

In This Issue

[MAR-ECO Animation](#)

[Census in Wild
Chronicles](#)

[Deep Sea Mining
Workshop](#)

[Seamount PhD
Opportunity](#)

[POST on ABC News](#)

[Niceville High School](#)

[Sylvia's Wish](#)

[InterRidge Fellowship](#)

[MAR-ECO Outreach
Paper](#)

[IPY Photo Exhibition](#)

[Long Beach Meeting](#)

MAR-ECO student animation wins Royal Television Society award

An animation produced by Aberdeen University students in collaboration with UK-based MAR-ECO researchers, has won the Scottish portion of the Royal Television Society awards for student documentary. This success has entered their animation into the next level up, a UK-wide competition. The animation, entitled "The Luminous Deep" features the story of a whale fall as it is colonized by the various bioluminescent life of the deep ocean. The animation can be downloaded (large file, 117 Mb) from Blueprint animation by clicking the following link: [Luminous Deep](#).



Census featured in two upcoming editions of National Geographic's Wild Chronicles



National Geographic's Wild Chronicles Episodes 404 and 405 highlight work by Census scientists. Episode 404, which first aired on PBS in the U.S. on January 28 of this year will replay on March 18

and features Humpback Whale Tagging and other Census

research in the Gulf of Maine. Episode 405, which aired first on February 4, highlights the Coral Reef Census research in Australia and is scheduled to air again on March 25. As these episodes and other videos become available they will be added to the [Video Gallery](#) of the Census Web Portal.

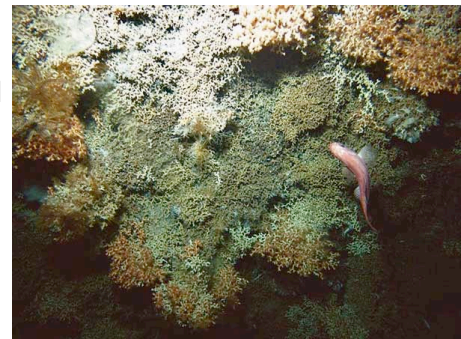
ChEss co-sponsors Deep Sea Mining workshop



ChEss is teaming up with Woods Hole Oceanographic Institution and InterRidge to host a workshop and colloquium on the mining of precious metals from deep sea vent sites. The workshop, scheduled to take place April 1-2, 2009, in Woods Hole, will draw together scientists, conservation groups, economists, industry representatives, policy specialists, and the public to discuss the issues of sustainability and environmental impact associated with the extraction of metal deposits from seafloor vents systems. The science and policy workshop will be followed by a public colloquium and discussion panel. Attendance at the workshop is limited and by invitation. Those wishing to attend should contact [InterRidge](#). For more information about the workshop and colloquium, please visit: [Deep Sea Mining](#).

CenSeam announces PhD Studenship opportunity

A PhD student position has become available at the University of St. Andrews and the Institute of Zoology in London. The research, entitled "Ecology of zooplankton and nekton above and around Indian Ocean seamounts", will be based in Aberdeen, Scotland



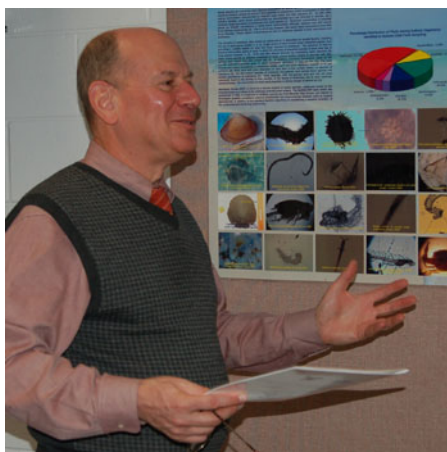
for the first year, London the second year, and then back in Scotland for the remainder. Data collection is scheduled to take place on a GEF-funded research cruise in Autumn 2009. Students with an interest in open ocean ecology and are numerate, computer literate, and familiar with population genetics are encouraged to apply before 31 March, 2009. For more information please visit: [PhD Opening](#).

POST / NOAA research featured on ABC News



A short segment on ABC News in the San Francisco Bay Area has highlighted the salmon and sturgeon tagging work of POST and NOAA. The 3-minute video features an overview of POST technology utilizing POST animations, interviews with NOAA scientists Bruce McFarlane and Steve Lindley, and underwater footage of both salmon and sturgeon. This segment, which brings POST tagging work into context for the general public, is available for viewing online at: [POST Segment](#).

Census Program Director visits Niceville High School's NaGISA program



In January 2009, Census Program Director Jesse Ausubel visited Niceville High School in Okaloosa, Florida, to survey their NaGISA field program and give a presentation about the Census. Niceville was the first high school to join the NaGISA program, and since joining has helped train other schools around the world on utilizing the NaGISA standardized protocol. Their travels have included Japan and Tanzania and, later this year, will include the island of Crete in Greece. Jesse expressed his admiration of the students' dedication to NaGISA work and scientific data collection and has helped the high school program to access local experts to aid in species identification. A full write up of Jesse's visit is available on the [Okaloosa County School District](#) website.

Her Deepness makes a wish

On Thursday February 5, Census researcher and ocean advocate Sylvia Earle was awarded the TED Prize for 2009. TED, which stands for Technology, Entertainment, and Design, is a conference held each year that brings together the who's who of the



tech, science, business, and arts industries. The TED prize, awarded to three people annually, grants the winner "One Wish to Change the World". Last week, Sylvia Earle, a.k.a Her Deepness, wished the following wish:

"I wish you would use all means at your disposal -- films! expeditions! the web! more! -- to ignite public support for a global network of marine protected areas, hope spots large enough to save and restore the ocean, the blue heart of the planet."

To read more about Sylvia, her wish, and what can be done to help please visit: [TED Prize - Sylvia Earle](#).

InterRidge calls for student and postdoctoral fellowship proposals



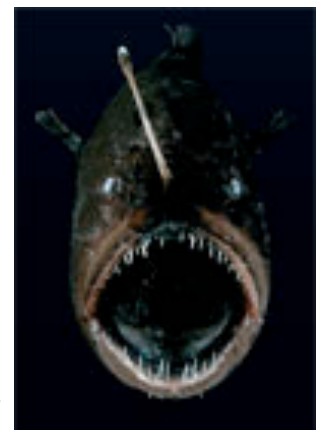
The International Seabed Authority and InterRidge have released a call for proposals and applications for the 2009 InterRidge Student and Postdoctoral Fellowship program. The program will award a total of three

grants of up to US\$5,000 to graduate students or postdoctoral researchers studying ridge-crest (oceanic spreading centers) science. These fellowships are intended to encourage international and interdisciplinary collaboration and the development of long-standing partnerships.

More information on this fellowship program and application materials are available at: [InterRidge Fellowship Program](#).

Science communications paper presented by MAR-ECO

MAR-ECO's E&O Team recently presented a paper at the 2008 "Public Communication of Science and Technology" (PCST-10) Conference in Sweden entitled "Deeper Than Light: Communicating an unknown world." This paper discusses the education and outreach activity of the MAR-ECO field project and the unique model that it is based on. By planning and executing, and then reporting E&O activities in concert and as an integral part of MAR-ECO's research, the field project has



been able to engage the public in each step of their scientific process. As a result, MAR-ECO work has been highlighted in television, print publications, websites, popular media, exhibitions, and even in art. This paper, which details their planning, methods, and results is available as a PDF: [Deeper Than Light Paper](#).

ArcOD contributes to IPY outreach project



The Census' ArcOD field project will be prominently featured in a photo exhibition celebrating Polar regions and their connections to the global environment, exploration, and economics. This

exhibition is part of the only pure outreach project in the International Polar Year Arctic Marine Biodiversity Cluster, which is entitled "Our Polar Heritage". The lead investigator, photographer Christian Moral, accompanied ArcOD scientists on their Spring 2008 Bering Sea expedition. Six of Moral's photos from this expedition form part of the exhibition that will be displayed at the United Nations in Geneva, Switzerland. The exhibition opens on 24 February. For more information please visit: [Our Polar Heritage](#).

Going to Sea to make Synthesis progress



Nearly 150 members of the global Census of Marine Life community "went to sea" last week aboard the Queen Mary Hotel docked in Long Beach, California. Plenary sessions on Sunday, February 1

and Wednesday, February 4 offered overviews of the significant progress and contributions that Census Projects and Cross-Project Synthesis efforts have made toward the first Census of Marine Life, which will be released as a "roll-out" of scientific papers, books, essays, and other products throughout 2010. For the 2 1/2 days and evenings between the plenary sessions, Project and Cross-Project Synthesis teams met in intensive planning and



writing workshops designed to move their teams closer to meeting 2010 goals.



The Census of Marine Life is a global network of researchers in more than 80 nations engaged in a 10-year scientific initiative to assess and explain the diversity, distribution, and abundance of life in the oceans. The world's first comprehensive Census of Marine Life—past, present, and future—will be released in 2010. www.coml.org

[Forward email](#)

[SafeUnsubscribe®](#)

This email was sent to jmharding@gso.uri.edu by jmharding@gso.uri.edu.
[Update Profile/Email Address](#) | Instant removal with [SafeUnsubscribe™](#) | [Privacy Policy](#).

Email Marketing by



Census of Marine Life | Office of Marine Programs | University of Rhode Island, Graduate School of Oceanography | Narragansett | RI | 02882